



# St Lawrence Church of England Primary School

*"Let your light shine before others, that they may see your good deeds and glorify your Father in heaven." Matthew 5:16*

Newsletter: 27<sup>th</sup> February 2026

Dear Parents and Carers,

Welcome back to a new half term! I hope you all had a relaxing and enjoyable week despite the very cold, wet weather!

We have had a great start to the half term. It was wonderful to welcome our School Improvement Partner in to school to see all of the wonderful learning that is taking place. He was particularly impressed with the learning attitudes of the children and the use of our oracy skills. Well done everyone.

Next week we will be celebrating World Book Day on Thursday. You should have received a letter about this before half term but if you have any questions, please do not hesitate to contact your child's class teacher. We look forward to seeing everyone dressed in their pyjamas!

We hope you have a wonderful weekend.

## Who can I contact?

If you have any queries about your child and their education, please contact your child's class teacher in the first instance. They will be available at the classroom door each day at the start and end of school.

If you need to speak with a member of staff about SEND, behaviour or safeguarding, please contact the following members of staff:

SEND – Mrs Ashford (Woodpeckers Class)

Behaviour – Mrs Smith (Robins Class)

Safeguarding – Mrs Bush or Mrs Nicklin



## Picture News

The story and question that the children will be thinking about next week is...

**Scientists at NASA are preparing to send astronauts back to the Moon, as part of a new space programme running over the coming years.**

**Question: Why do people explore space?**



## St Lawrence Vision and Values

This half term our value is Respect

Respect is ...

Readiness to listen

Everyone being valued

Showing appreciation

Praying for people

Expressing opinions sensitively

Caring for our environment

Treating property carefully



## Dates for your Diary

All dates for the school year can be found on the school website. Please click [here](#) to access them.

## Celebrations

This week our stars of the week are

**Robins Class:** Morris Beddall

**Woodpeckers Class:** Jemimah Mbabgong & Lara Burnell

**Owls Class:** Margo Adams & Fletcher Fraiel-Smith

**Kites Class:** Adelina Tucina

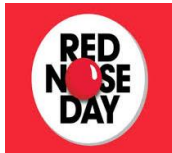
**Eagles Class:** Daryna Mushatova



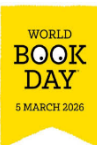
Well done to all of these children!

## Red Nose Day

There are a very limited number of red noses left! School Council will be selling these next week at breaktime for £2 each.



## World Book Day



This year, our theme is bedtime stories so **we are inviting children to wear their pyjamas to school on World Book Day and bring their favourite bedtime story from home into school to share.** We would also like to create a display of pictures showing children reading at bedtime or being read to. If you can, please send any photos that you have to Mrs Blackburn – [admin@st-lawrenceschool.co.uk](mailto:admin@st-lawrenceschool.co.uk)

Sharing a book is a chance to reconnect and make special memorable moments. **With this in mind, we would like to invite you into school at 2:45pm on World Book Day to share a story with your child.**

**We will also be running a competition for the best dressed wooden spoon. Children can transform a wooden spoon into their favourite book character. Bring it into school on World Book Day and the school council will judge and nominate the winners who will each receive a prize.**

## Attendance

We are always trying to improve our attendance in school as we know that when children are in school regularly, they can get the most out of their learning. This week our school attendance was **95.6%**

It can be tricky deciding whether or not to keep your child off school when they're unwell.

There are government guidelines for schools about [managing specific infectious diseases at GOV.UK](#). These say when children should be kept off school and when they shouldn't. The NHS also publish advice for parents and carers which can be found [HERE](#). Please refer to this if you are ever unsure or call the school office.



# Attendance Matters

Every student. Every day.

## PTA Competition winner!

The winner of the PTA competition to guess the number of sweets in the jar is Aurelia Hill – Well Done! The exact number of sweets was 252. This competition raised £42 for the PTA. Thank you to all of those that took part.



## This week at St Lawrence....

*Robins Class have been learning all about Chinese New Year and have made their own Chinese Lanterns.*



*In Science, Woodpeckers planted seeds and they are going to watch them grow over the term.*

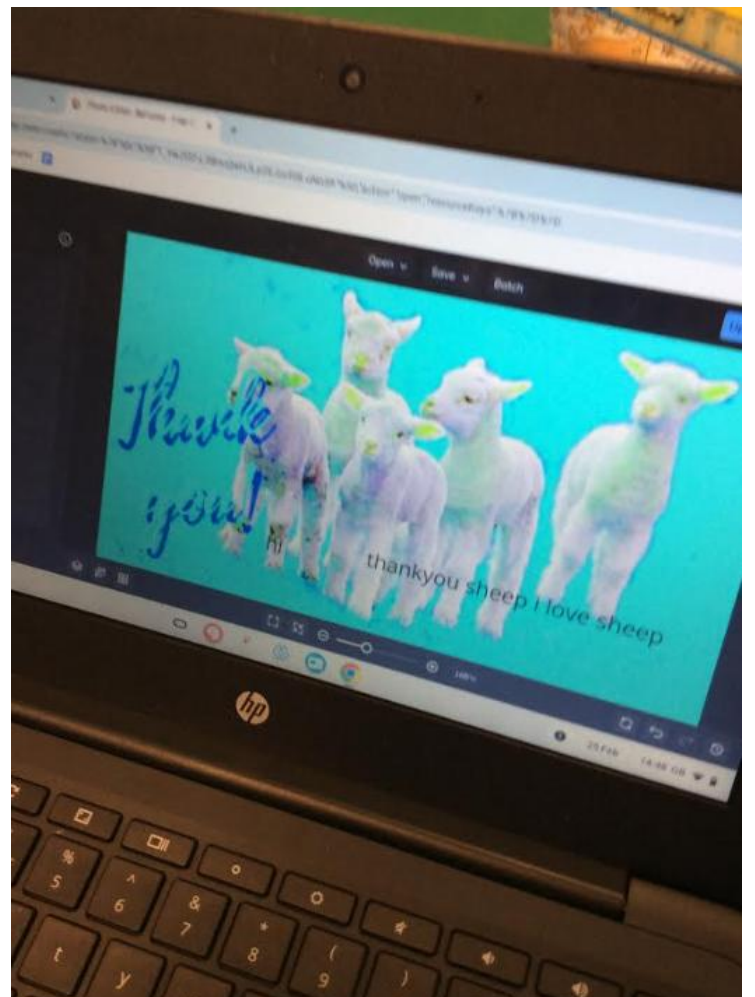


## This week at St Lawrence...

Eagles Class went to the environmental area to collect different types of leaves and sorted them in a venn diagram for Science.



For computing this week Owls Class have been editing images.



# Voice 21 Conversation Starter...

What are you most proud of yourself for?



## Things you might be interested in.....

**It all starts with... ALL STARS CRICKET**

<b>We all play at:</b> R&HTCC, Short Stocks, NN10 OEA	
<b>Session dates:</b> 8th May - 26th June, 2026	
<b>Session timings:</b> Friday nights, 18:30 - 19:30	<b>Ages:</b> 5-8 Years old
<b>Contact:</b> Ben Hodges 07498321781	

Sign up today at [allstarscricket.co.uk](http://allstarscricket.co.uk)

OFFICIAL PARTNER OF ALL STARS CRICKET

**Bedford Borough's HOLIDAY ACTIVITIES and FOOD Programme**

**HAF is back!** This Easter, Bedford Borough Council is funding an exciting range of **FREE activities** for children and families on **benefit related free school meals** during the Easter Holidays.

*From 6pm on the 3<sup>rd</sup> March, all parents / carers of eligible children will receive a HAF voucher code and link to book from Holiday Activities, via email. Places are limited, so booking is essential – bookings will only be able to be made through the voucher code link. If you have not received your voucher code by the 4<sup>th</sup> March (don't forget to check your junk folder) or have any issues, please contact your school directly.*

Visit the Bedford Local Offer website for more information:  
 <https://localoffer.bedford.gov.uk/haf>

SCAN ME